

*Shakespeare*<sup>®</sup>

Electronic Products Group



## Commercial Marine Antennas

Issue 01

**Shakespeare**<sup>®</sup>

**Electronic Products Group**

Shakespeare Electronic Products Group is a world leader in antenna design and technology with over 50 years of experience in the marine markets, commercial, military and leisure.

- This catalogue is designed to focus on Shakespeare's commercial range of antennas with antennas and mounts for all Commercial, Fishing and Super Yacht applications.
- The range within the catalogue represents an outstanding selection of tough, high quality antennas to meet the most demanding of conditions.
- For the "full-range" product catalogue, including connectors, switches and accessories, please see the [www.shakespeare-marine.com](http://www.shakespeare-marine.com) website or the 'Shakespeare Electronics Product Group Marine Antennas European Catalogue' available from your national distributor or contact the European Office:

Shakespeare Antennas  
Enterprise Way  
Fleetwood  
Lancashire  
FY7 8RY  
United Kingdom

Tel: +44 (0)1253 858787

E mail: [sales.manager@jardenuk.co.uk](mailto:sales.manager@jardenuk.co.uk)

Note: The measurements and data provided in this catalogue are given in good faith but Shakespeare accepts no responsibility for errors or omissions. If you have any questions about installing our equipment, we advise that a qualified or established marine electronics engineer is used or consulted.

In the interests of product improvement, we reserve the right to alter specifications and sizes without prior notice.

The designs and line drawings in this catalogue are ©2008 Shakespeare Company, LLC, and may not be reproduced without permission.

Cover photos and photos are courtesy of CN gallery.

# *Introduction*





# Content

---



	<b>Page No.</b>
<b>VHF Antennas</b>	
• Phase III .....	4
• Galaxy Silver Series .....	7
• Galaxy .....	7-8
• Classic .....	11-12
• V-Tronix .....	14
<b>Broadband VHF Antennas</b>	
• Galaxy .....	9
<b>AM/FM Antennas</b>	
• Phase III .....	5
• Galaxy .....	9
<b>AIS Antennas</b>	
• Phase III .....	6
• Galaxy .....	10
• Classic .....	11
• V-Tronix .....	14
<b>Cellular Antennas</b>	
• Phase III .....	5
<b>Loran Antennas</b>	
• Classic .....	13
<b>HF/SSB Antennas</b>	
• Phase III .....	6
• Galaxy .....	10
• Classic .....	12-13
<b>TV Antennas</b>	
• SeaWatch .....	15
<b>Wi-Fi Antennas</b>	
• Galaxy .....	10
<b>Accessories</b>	
• Mast Extensions .....	15
• Mounts .....	16-17
<b>Reference</b>	
• All About Antennas - Guide to antennas .....	18
• Technical Tables .....	19

Designed and manufactured in the USA, using the highest quality materials, Phase III antennas deliver outstanding performance. With beautifully finished radomes, Phase III antennas are exceptionally strong and long lasting. Suitable for all types of vessels, where high performance and good looks are the priority.



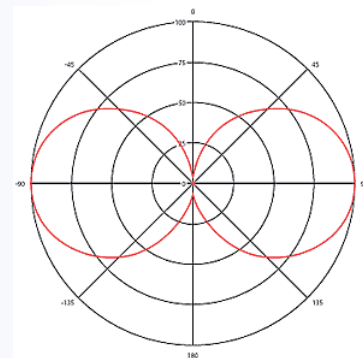
**1.2m**  
**GAIN**  
**3dBi**

## VHF Antennas

### 6400 - 1.2m VHF Antenna

This outstanding antenna brings the quality of our incomparable Phase III electronic elements to a 1.2m antenna.

- Centre-fed ½ wave coaxial sleeve.
- Silver plated outer plus copper inner conductor for extended performance.
- 1.2m Radome: Foam filled, extra strong fibreglass, superb finish.
- Female 'N' connector inside mounting sleeve.
- 1in - 14 stainless steel adaptor mounting sleeve
- Suggested mount 4187-HD
- SWR less than 1.5:1 at 156.8MHz.
- Bandwidth 3 MHz within 2.01 VSWR
- Impedance: 50 ohms
- Max input power 150 watts.
- Vertical Polarization



ELEVATION PATTERN:  
Style 6400 3dB Gain.

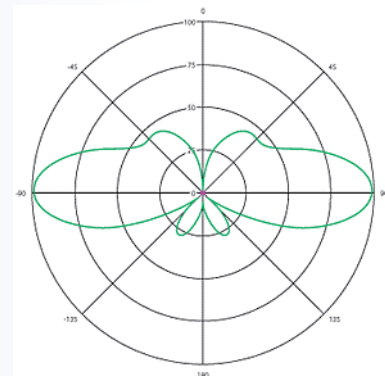


**2.4m**  
**GAIN**  
**6dBi**

### 6225 - 2.4m VHF Antenna

Built for performance and durability, this Heavy Duty antenna is ideal for commercial and superyacht applications.

- Collinear-phased 5/8 wave elements.
- Silver plated outer plus copper inner conductor for extended performance.
- 2.4m Radome: Foam filled, extra strong fibreglass, superb finish.
- Female 'N' connector inside mounting sleeve.
- 1in - 14 stainless steel adaptor mounting sleeve
- Suggested mount 4187-HD
- SWR less than 1.5:1 at 156.8MHz.
- Bandwidth 3 MHz within 2.01 VSWR
- Impedance: 50 ohms
- Max input power 150 watts.
- Vertical Polarization
- DC ground



ELEVATION PATTERN:  
Style 6225 6dB Gain

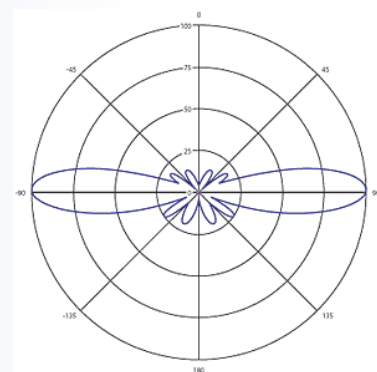


**5.6m**  
**GAIN**  
**9dBi**

### 6018 - 5.6m VHF Antenna

Rugged, high-strength, high-performance radome for stability and reliability in extreme conditions.

- Collinear-phased ½ wave silver elements with choking sleeve.
- Silver plated outer plus copper inner conductor for extended performance.
- 5.6m Radome: Foam filled, extra strong fibreglass, superb finish.
- Female 'N' connector inside mounting sleeve.
- 1in - 14 stainless steel adaptor mounting sleeve
- Suggested mount 409-R or 410-R
- SWR less than 1.5:1 at 156.8MHz.
- Bandwidth 3 MHz within 2.01 VSWR
- Impedance: 50 ohms
- Max input power 150 watts.
- Vertical Polarization
- DC ground



ELEVATION PATTERN:  
Style 6018 9dB Gain





## AM/FM Antenna

### 6420 - 1.2m AM/FM Antenna

AM/FM reception couldn't get any better, and the four-foot 6420 coordinates with the looks of other 1.2m Phase III antennas.

- High-gloss, high-performance, non-yellowing polyurethane finish
- Female type "N" connector inside mounting sleeve for easy mounting and dismantling for stowage
- 1 in - 14 stainless steel adaptor mounting sleeve
- Includes 6m RG-62 cable with Motorola type plug installed
- Suggested mount: Shakespeare Style 4187-HD Ratchet Mount



## Cellular Antennas

### 6410 - 1.2m Cellular Antenna

- This compact antenna handles all digital, analogue and PCS cellular bands.
- Silver plated outer plus copper inner conductor for extended performance.
- Female type "N" connector inside mounting sleeve for easy mounting and dismantling for stowage
- 1 in - 14 stainless steel adaptor mounting sleeve
- Suggested mount: Shakespeare Style 4187-HD
- Max. Power Input: 50 watts
- SWR: Less than 1.5:1 at 852.65 MHz; Less than 1.5:1 at 1918.7 MHz
- Bandwidth: 96 MHz within 2.0:1 VSWR (800/900 MHz band); 140 MHz within 2.0:1 VSWR (1900 MHz band)
- Frequency: Dual Band 800-900 MHz & 1800-1900 MHz



### 6235 - 2.4m AM/FM Antenna

This AM/FM Entertainment Band antenna takes AM/FM reception to new heights with the looks of other 2.4m Phase III antennas.

- High-gloss, high-performance, non-yellowing polyurethane finish
- Female type "N" connector inside mounting sleeve for easy mounting and dismantling for stowage
- 1 in - 14 stainless steel adaptor mounting sleeve
- Includes 6m RG-62 cable with Motorola type plug installed
- Suggested mount: Shakespeare Style 4187-HD Ratchet Mount



### 6237 - 2.4m Cellular Antenna

- Handles all digital, analogue and PCS cellular bands. A brass choking sleeve eliminates pattern distortion due to cable radiation.
- Silver plated outer plus copper inner conductor for extended performance.
- Female type "N" connector inside mounting sleeve for easy mounting and dismantling for stowage
- 1 in - 14 stainless steel adaptor mounting sleeve
- Suggested mount: Shakespeare Style 4187-HD
- Max. Power Input: 50 watts
- SWR: Less than 1.5:1 at 852.65 MHz; Less than 1.5:1 at 1918.7 MHz
- Bandwidth: 96 MHz within 2.0:1 VSWR (800/900 MHz band); 140 MHz within 2.0:1 VSWR (1900 MHz band)
- Frequency: Dual Band 800-900 MHz & 1800-1900 MHz

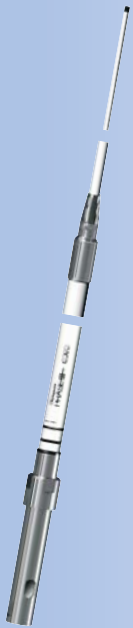




## HF/SSB Antenna

### 6390 - 5.6m HF/SSB Whip Antenna

For long range HF/SSB communication, this side-fed antenna handles 1 KW output power, and its high strength and superior performance for all heavy duty applications.



5.6m  
Up to  
1kW

- Full length conductors. No loading coil.
- Silver plated outer plus copper inner conductor for extended performance.
- 5.6m Radome: Foam filled, extra strong fibreglass with superb finish.
- Female type "N" connector inside mounting sleeve for easy mounting and dismounting for stowage
- 2 sections; base 2.8m, Tip 2.8m
- 1in - 14 stainless steel adaptor mounting sleeve
- Suggested mount: 409-R or 410-R
- Frequency band: HF / SSB.
- Max Input power 1 KW
- Resonant frequency: 14 MHz
- Polarization: Vertical.

## AIS Antenna

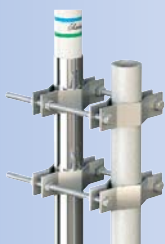
### 6396-AIS - 1.2m AIS Antenna - 3dB Gain.

Specially engineered for the extra bandwidth required by AIS transceivers, this great performer puts Phase III quality where it counts.



1.2m  
GAIN  
3dBi

- Collinear-phased 5/8-wave elements
- Silver plated outer plus copper inner conductor for extended performance.
- 1.2m Radome: Foam filled, extra strong fibreglass, superb finish.
- Female type 'N' connector inside mounting sleeve
- 1in - 14 stainless steel adaptor mounting sleeve
- Suggested mount 4187-HD
- Frequency band: VHF AIS.
- SWR less than 1.5:1 at 162MHz.
- Bandwidth: 5 MHz within 2.01 VSWR
- Impedance: 50 ohms
- Max input power: 50 watts.
- Polarization: vertical
- DC ground



### Mounting Options

See pages 16-17



## Galaxy Series - Key features:

- Brass and copper elements – gives maximum range and efficiency.
- Hand soldered connectors give improved performance and reliability.
- Polished stainless steel ferrule – resists corrosion.
- Ultra smooth fibreglass - seals out moisture to prevent corrosion.
- Protected by a coat of high gloss, non-yellowing, polyurethane - ensures a long lasting gloss white appearance.
- Coax cable supplied is UV stabilized and low loss – giving added performance and reliability.

## Galaxy Silver Series Extended Performance VHF

- Silver-plated brass elements have been added to our award-winning Galaxy® technology producing extended performance, longer service life, and peace of mind communication.
- Flexible coax that has higher power capabilities, less loss per metre, to maximize antenna performance.
- High-quality, silver-plated brass outer element for extended life, maximum efficiency and superior mechanical strength.
- Stranded, high-quality tinned copper inner conductor maximizes signal strength.
- Ultra efficient, silver-plated brass choking sleeve suppresses cable radiation for maximum on-air signal.
- Low-loss ethafoam spacer for strong mechanical support.
- Low-loss polyethylene dielectric.
- Exclusive white Fibreglass seals out moisture to prevent corrosion.
- Rugged, high-gloss, non-yellowing finish assures long-lasting beauty.

### 5400-XP - 1.2m Heavy Duty, Extended Performance VHF

- Heavy Duty, High Gloss, white fibreglass antenna
- Collinear-phased 5/8 wave elements.
- Elements: Copper and silver plated brass for outstanding long distance communication.
- Polished stainless steel ferrule with 1"-14 thread
- 6m RG-8/X extra low-loss cable plus a PL-259 connector
- Suggested mounts: 4187 or 5187
- Max Power Input: 150 watts
- SWR: Nominally 1.5:1 at 156.8MHz.
- Bandwidth: 5MHz within 2.0:1 VSWR
- DC Grounding : No



### 5225-XP - 2.4m Heavy Duty, Extended Performance VHF

- Heavy Duty, High Gloss, white fibreglass antenna
- Collinear-phased 5/8 wave elements.
- Elements: Copper and silver plated brass for outstanding long distance communication.
- Polished stainless steel ferrule with 1"-14 thread
- 6m RG-8/X extra low-loss cable plus a PL-259 connector
- Suggested mounts: 4187 or 5187
- Max Power Input: 150 watts
- SWR: Nominally 1.5:1 at 156.8MHz.
- Bandwidth: 6MHz within 2.0:1 VSWR
- DC Grounding : Yes



## Wireless Series VHF Antennas

- Extra tough white fibreglass with high gloss, non yellowing finish.
- Connector – SO239 inside mounting sleeve.
- Mounting system uses 1"-14 thread polished stainless steel adaptor mounting sleeve.
- 1"-11 thread BSP adaptor for mounting on pipe systems. (Optional).
- Matching VHF and AM / FM antennas.

### 5410-XTC 1.2m Heavy Duty VHF

- Heavy Duty, High Gloss, white fibreglass VHF antenna.
- Excellent antenna for leisure and commercial applications.
- Brass / Copper Element for improved transmit / receive performance.
- Galaxy non-yellowing polyurethane finish.
- 1" – 14 thread polished stainless steel adaptor mounting sleeve
- Connector termination: UHF (SO 239) inside mounting sleeve for easy mounting and dismantling for stowage.
- Optional 1"-14 to 1" -11 BSP water pipe adaptor
- Suggested mount: 4187, 4187HD, 5187 or 4715 clamp set.
- Max Power Input: 50 watts
- SWR: Nominally 1.5:1 at 156.8MHz.
- Bandwidth: 5MHz within 2.0:1 VSWR
- DC Grounding: No



### 5400-XTM 1.2m Heavy Duty Mast Mount VHF

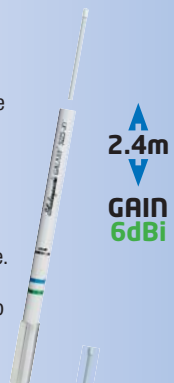
Same as **5400-XTC** except:

- Stainless steel mast mounting sleeve.
- SO-239 connector.
- U bolts included. (Optional: use 4715 mount clamps)



### 5225-XTC 2.4m Extra Heavy Duty VHF

- Heavy Duty, High Gloss, white fibreglass VHF antenna.
- Excellent antenna for leisure and commercial applications.
- Brass / Copper Element for improved transmit / receive performance.
- Galaxy non-yellowing polyurethane finish.
- 1" – 14 thread polished stainless steel adaptor mounting sleeve
- Connector termination: UHF (SO 239) inside mounting sleeve for easy mounting and dismantling for stowage.
- Optional 1"-14 to 1" -11 BSP water pipe adaptor
- Suggested mount: 4187, 4187HD, 5187 or 4715 clamp set.
- Max Power Input: 100 watts
- SWR: Nominally 1.5:1 at 156.8MHz.
- Bandwidth: 6MHz within 2.0:1 VSWR
- DC Grounding: Yes



### 5325-XTM - 2.4m Extra Heavy Duty Mast-Mount VHF

Same as **5225-XTC** except:

- Stainless steel mast-mount sleeve
- SO-239 connector
- U-bolts included - Optional 4715 Mounting Clamps





# GALAXY



## VHF Antennas



1.2m  
GAIN  
3dBi

### 5400-XT / 5401-XT - 1.2m Heavy Duty VHF

- Heavy Duty, High Gloss White Fibreglass antenna.
  - **5400-XT** - White
  - **5401-XT** - Black
- Brass / copper elements.
- Galaxy non-yellowing polyurethane finish.
- Polished stainless steel ferrule with 1"-14 thread
- 6m RG-8/X extra low-loss cable plus a PL-259 connector
- Suggested mount: Style 4187 or 5187
- Max Power Input: 50 watts
- SWR: Nominally 1.5:1 at 156.8MHz.
- Bandwidth: 5MHz within 2.0:1 VSWR
- DC Grounding : No



4.3m  
GAIN  
8dBi

### 5230 - 4.3m Extra Heavy Duty VHF, 8dB Gain

- Fibreglass 2 section dipole antenna
- Galaxy non-yellowing polyurethane finish.
- Collinear-phased 5/8 wave over 1/2 wave dipole maximizes range and signal quality.
- Polished stainless steel ferrule with 1"-14 thread
- 6m RG-8/X extra low-loss cable plus a PL-259 connector
- 2 sections: Base 2.4m, Tip 1.9m - UPS shippable.
- Suggested mount: 409-R or 410-R mounting kits
- Max input power: 200 watts.
- SWR: Nominally 1.5:1 at 156.8MHz
- Bandwidth: 3MHz within 2.0:1 VSWR
- DC Grounding : Yes



2.4m  
GAIN  
6dBi

### 5225-XT / 5226-XT - 2.4m Extra Heavy Duty VHF

- Extra Heavy Duty, High Gloss, fibreglass antenna.
  - **5225-XT** - White
  - **5226-XT** - Black
- Collinear-phased 5/8 wave brass / copper elements maximizes range and quality.
- Galaxy non-yellowing polyurethane finish.
- Polished stainless steel ferrule with 1"-14 thread
- 6m RG-8/X extra low-loss cable plus a PL-259 connector
- Suggested mount: Style 4187 or 5187
- Max Power Input: 100 watts
- SWR: Nominally 1.5:1 at 156.8MHz.
- Bandwidth: 6MHz within 2.0:1 VSWR
- DC Grounding : Yes



5.5m  
GAIN  
9dBi

### 5018 - 5.5m Extra Heavy Duty VHF. 9dB Gain

- Fibreglass 2 section whip antenna with outstanding long range performance
- Collinear-phased 1/2 wave elements with choking sleeve to suppress cable radiation.
- Galaxy non-yellowing polyurethane finish.
- Polished stainless steel ferrule with 1"-14 thread
- 6m RG-8/X extra low-loss cable plus a PL-259 connector
- 2 sections: Base 2.65m, Tip 2.65m.
- Suggested mount: 409-R or 410-R mounting kits
- Max input power: 150 watts.
- DC Grounding : No



3m  
GAIN  
6dBi

### 5399 - 3m Extra Heavy Duty VHF. 6dB Gain

- Fibreglass 2 section whip antenna
- Galaxy non-yellowing polyurethane finish
- Collinear-phased 5/8 wave elements maximizes range and signal quality.
- Polished stainless steel ferrule with 1"-14 thread
- 6m RG-8/X extra low-loss cable plus a PL-259 connector
- 2 sections: Base 1.9m; Tip 1m - UPS shippable.
- Suggested mount: 4187-HD Ratchet Mount for self-support applications, or 409-R or 410-R mounting kit.
- Max input power: 100 watts
- SWR: Nominally 1.5:1 at 156.8MHz.
- Bandwidth: 3MHz within 2.0:1 VSWR
- DC Grounding : Yes



7.0m  
GAIN  
9dBi

### 5309-R - 7.0m Extra Heavy Duty VHF. 9dB Gain

- Fibreglass 2 section whip antenna with outstanding long range performance
- Collinear-phased 1/2 wave elements with choking sleeve to suppress cable radiation.
- Galaxy non-yellowing polyurethane finish.
- Polished stainless steel ferrule with 1"-14 thread
- 6m RG-8/X extra low-loss cable plus a PL-259 connector
- 2 sections: Base 4.3m, Tip 2.66m
- Suggested mount: 409-R or 410-R mounting kits
- Twin to: Galaxy **5310-R** HF/SSB
- Max input power: 150 watts.
- SWR: Nominally 1.5:1 at 156.8 MHz
- Bandwidth: 3 MHz within 2.0:1 VSWR
- DC Grounding : No



# GALAXY®



## Broadband VHF Antennas

Highly sophisticated antennas with performance maximized from 136 to 174 MHz. It will handle continuous duty at 125 watts, maximum input power. Designed for military, commercial, law enforcement, and disaster support. US Patent 5,982,332

### HS-2774-1 - 1.8m Broadband 38MHz bandwidth (136-174 MHz) VHF

- Exceptional Performance Broadband VHF antenna.
- Extra heavy duty, high gloss fiberglass.
- Hand soldered brass elements.
- Performance maximized from 136 MHz to 174 MHz
- Bandwidth: 38 MHz within 2.0:1 VSWR
- 6m RG8X cable and PL-259 connector.
- Polished stainless steel ferrule with 1"-14 thread
- Suggested mount: 4187-HD Ratchet Mount
- Frequency: 136 – 174 MHz
- Max Power Input: 125 watts continuous.
- VSWR: Less than 2:1 across the 136-174 MHz VHF band
- Directive Gain on the horizon: @ 136-174 MHz +3.3dBi;  
@ 154MHz +4dBi; @ 174 KHz +4.3dBi
- DC Grounding : Yes



### HS-2774

- Same as HS-2774-1, but with mast mount.
- Stainless Steel Mounting Sleeve.
- Connector: 'N' female.
- Supplied: stainless steel U-bolts

## XTC Series Wireless AM/FM Antennas

- Connector – SO239 inside mounting sleeve.
- Mounting system uses 1"-14 thread polished stainless steel adaptor mounting sleeve.
- 1"-11 thread BSP adaptor for mounting on pipe systems. (Optional).
- Matching VHF and AM / FM antennas.

### 5420-XTC LITTLE GIANT™

#### 1.2m Heavy Duty AM/FM Antenna.

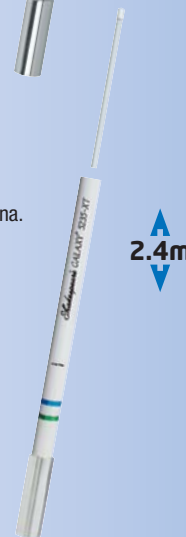
- Heavy Duty, High Gloss, white fiberglass AM/FM antenna.
- High performance AM / FM antenna.
- Galaxy non-yellowing polyurethane finish
- Brass/copper elements
- An outstanding antenna for AM/FM reception
- SO-239 connector inside mounting sleeve for easy mounting and dismounting for stowage
- 6m RG-62 cable plus fitted Motorola plug
- 1in – 14 thread polished stainless steel adaptor mounting sleeve
- Suggested mount: Shakespeare style 4187, 4187-HD, 5187, or 4715 clamp set
- 1" – 11 thread BPS adaptor (optional)
- Matches the 5410-XTC Galaxy 1.2m VHF antennas.



### 5235-XTC

#### 2.4m Heavy Duty AM/FM Antenna

- Heavy Duty, High Gloss, white fiberglass AM/FM antenna.
- High performance AM / FM antenna.
- Galaxy non-yellowing polyurethane finish
- Brass/copper elements
- An outstanding antenna for AM/FM reception
- SO-239 connector inside mounting sleeve for easy mounting and dismounting for stowage
- 6m RG-62 cable plus fitted Motorola plug
- 1in – 14 thread polished stainless steel adaptor mounting sleeve
- Suggested mount: Shakespeare style 4187, 4187-HD, 5187, or 4715 clamp set
- Optional 1in – 11 thread BPS adaptor
- Matches the 5225-XTC Galaxy 2.4m VHF antennas.



## AM/FM Antennas

### 5420-XT / 5421-XT LITTLE GIANT™

#### 1.2m Heavy Duty AM/FM Antenna.

- Fiberglass AM/ FM antenna
  - 5420-XT - White
  - 5421-XT - Black
- Tapered fiberglass tube.
- Galaxy non-yellowing polyurethane finish (5420-XT)
- An outstanding antenna for AM/FM reception.
- Matches other 1.2m Galaxy antennas.
- Polished stainless steel ferrule with 1"-14 thread
- 6m RG-62 cable plus fitted Motorola type plug.
- Suggested mount: Style 4187 or 5187



### 5235-XT

#### 2.4m Heavy Duty AM/FM Antenna

- Fiberglass whip antenna
- Galaxy non-yellowing polyurethane finish.
- Tapered fiberglass tube.
- Its 2.4m length offers extra reach.
- Matches other 2.4m Galaxy antennas.
- Polished stainless steel ferrule with 1"-14 thread
- 6m RG-62 cable plus fitted Motorola type plug.
- Suggested mount: Style 4187 or 5187



## AIS Antenna

### 5396-AIS - 1.2m Heavy Duty AIS

- Heavy Duty, High Gloss, white fibreglass AIS antenna.
- Brass / copper elements.
- Galaxy non-yellowing polyurethane finish.
- Polished stainless steel ferrule with 1" - 14 thread
- 6m RG-8/X extra low-loss cable plus a PL-259 connector
- Suggested mount: Style 4187 or 5187
- Max Power Input: 50 watts
- SWR: Nominally 1.5:1 at 162MHz.
- Bandwidth: 5MHz within 2.0:1 VSWR
- DC Grounding : No



1.2m  
GAIN  
3dBi

## Wi-Fi Antenna

### 5248 - 0.6m Wi-Fi Antenna , 8dB Gain

- Heavy Duty, High Gloss, white fibreglass antenna
- Hi-tech PCB copper elements.
- Wi-Fi band
- 1in - 14 stainless steel adaptor mounting sleeve
- Suggested mounts: 4187 or 5187
- Max Power Input: Wi-Fi Watts
- Bandwidth: 80MHz within 2.0:1 VSWR



0.6m  
GAIN  
8dBi

## HF/SSB Antennas

### 5390 - 5.5m Extra Heavy Duty SSB whip

- Fibreglass 2 section whip antenna
- Galaxy non-yellowing polyurethane finish.
- Full length conductors, no loading coil
- Side-feed termination band.
- Polished stainless steel ferrule with 1" - 14 thread
- Mounting Kit & Cable sold separately.
- Two sections: Base 2.66m; Tip 2.66m
- Suggested mount: 409-R or 410-R mounting kits
- Max Power Input: 1 KW
- Frequency: 2-30MHz with tuner.
- Resonant point: 10.8MHz within 2.0:1SWR



5.5m  
Up to  
1KW

### 5310-R - 7.0m Extra Heavy Duty SSB whip

- Fibreglass 2 section whip antenna
- Galaxy non-yellowing polyurethane finish.
- Full length conductors, no loading coil
- Reinforced insulation to allow input power up to 1 KW.
- Side-feed termination band.
- Polished stainless steel ferrule with 1" - 14 thread
- Mounting Kit & Cable sold separately.
- Two sections: Base 4.4m, Tip 2.66m - UPS shippable.
- Suggested mount: 409-R or 410-R mounting kits (Twin to Galaxy 5309-R VHF)
- Max Power Input: 1 KW
- Frequency: 2-30MHz with tuner.
- Resonant point: 10.8MHz within 2.0:1SWR



7.0m  
Up to  
1KW





# Classic



Extra heavy duty, rugged antennas with powerful internal elements, providing reliable service under the most demanding conditions.

Shakespeare  
**2 YEAR**  
WARRANTY

## AIS Antenna

### **396-1-AIS** - 1.2m Mast Mount AIS Antenna.

- Heavy Duty AIS antenna with a mast mounting sleeve.
- Designed with extra band width for AIS transceivers eliminating interference from nearby channels.
- SO-239 connector at the base
- Suggested Mount: U-Bolts included or use optional 4715 mounting clamps.
- Max input power: 50 watts.
- SWR 1.5:1 at 162 MHz
- Bandwidth: 6MHz
- DC Grounding : No

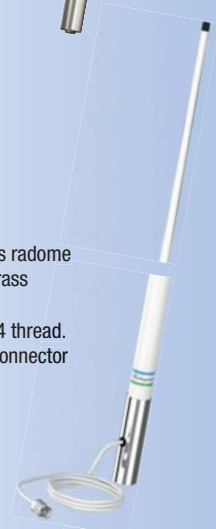


1.2m  
GAIN  
3dBi

## VHF Antenna

### **5202** - 2.4m Rugged VHF.

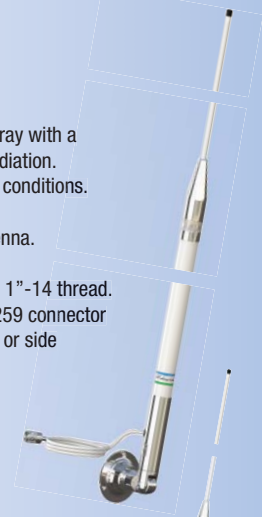
- Collinear phased 5/8-wave Heavy Duty fibreglass radome with High-gloss, durable, polyurethane finish. Brass Copper Element.
- Chrome-plated brass ferrule with standard 1"-14 thread.
- 6m RG-8/X extra low-loss cable plus a PL-259 connector
- Suggested mounts: 4187 / 5187
- Max Power Input: 100 watts
- SWR: Nominally 1.5:1 at 156.8MHz.
- Bandwidth: 6MHz within 2.0:1 VSWR
- DC Grounding : Yes



2.4m  
GAIN  
6dBi

### **4018** - 5.8m Heavy Duty VHF.

- Phased 1/2-wave elements in a collinear array with a coaxial choking sleeve to suppress cable radiation.
- Long distance antenna for use in rough sea conditions.
- Brass Copper Element.
- Heavy Duty two section Fibreglass VHF antenna.
- 2 sections: Base 4.1m; Tip 1.7m
- Chrome-plated brass ferrules with standard 1"-14 thread.
- 6m RG-8/X extra low-loss cable plus a PL-259 connector
- Suggested mount: 409-R or 410-R for deck or side mounting
- Max Power Input: 50 watts
- SWR: Nominally 1.5:1 at 156.8MHz.
- Bandwidth: 3MHz within 2.0:1 VSWR
- DC Grounding : No



5.8m  
GAIN  
9dBi

### **4018-M** - 5.9m Heavy Duty VHF.

Specification same as **4018** plus:

- For land-based stations and mast mount on vessels.
- Chrome plated brass ferrules mid section.
- SO-239 connector at the base.
- Aluminium sleeve bottom ferrule for mast mounting.
- Suggested mount: 1 3/4" U bolts supplied or use optional 4715 mounting clamps.



5.9m  
GAIN  
9dBi

# Classic

## VHF Antennas

### 476 - 6.4m Heavy Duty VHF

- Phased 1/2-wave elements in a collinear array with a broadband matching section, a coaxial choking sleeve. Brass Copper Element
- For heavy duty applications plus land-based stations.
- 2 sections: Base 4.1m; Tip 1.7m
- Chrome plated brass ferrules mid section.
- Aluminium sleeve bottom ferrule for mast mounting.
- Mounting: Strap directly to mast or use Shakespeare 483 Clamp Set or 484 Wall Mounting Brackets
- Suggested mount: 1 3/4" U bolts supplied or use optional 4715 mounting clamps.
- SO-239 connector at the base
- Max Power Input: 350 watts
- SWR: Nominally 1.5:1 at 156.8MHz.
- Bandwidth: 10MHz within 2.0:1 VSWR
- DC Grounding : Yes

6.4m  
GAIN  
10dBi

### 5208-R - 7m Heavy Duty VHF

- Phased 1/2-wave elements in a collinear array with choking stub to suppress cable radiation and a band spread matching sleeve
- The 5208-R delivers outstanding performance with its nine phased 1/2-wave element and 7m design with Brass Copper element.
- 2 sections: Base 4.1m; Tip 2.9m
- Chrome plated brass ferrules.
- Includes 4.5m RG-58 cable.
- Suggested mount: 409-R or 410-R for deck or side mounting
- Max Power Input: 50 watts
- SWR: Nominally 1.5:1 at 156.8MHz.
- Bandwidth: 5MHz within 2.0:1 VSWR
- DC Grounding : No

7.0m  
GAIN  
9dBi

### 5208-3 - 7m Heavy Duty VHF

- Phased 1/2-wave elements in a collinear array with choking stub to suppress cable radiation and a band spread matching sleeve
- The 5208-R delivers outstanding performance with its nine phased 1/2-wave element and 7m design with Brass Copper element.
- 3 sections: Base 1.9m; Middle 2.54m; Tip 2.67m
- Chrome plated brass ferrules.
- Includes 4.5m RG-58 cable.
- Suggested mount: 409-R or 410-R for deck or side mounting
- Max Power Input: 50 watts
- SWR: Nominally 1.5:1 at 156.8MHz.
- Bandwidth: 5MHz within 2.0:1 VSWR
- DC Grounding : No

7.0m  
GAIN  
9dBi

## HF/SSB Antenna

### 390 - 7m SSB Whip Antenna.

- Award-winning SSB antenna.
- Conductors run the full length (no loading coil) – permanently sealed.
- Chrome-plated brass ferrules with side feed termination band
- 2 sections: Base 4.1m; Tip 2.8m
- Suggested mounts: 409-R or 410-R for deck or side mounting (mount support bracket 1.5m - 2.1m up from base).
- Mount kit and cable sold separately.
- Max Power Input: 1 KW
- Frequency: 2-30MHz with tuner.
- Resonant point 10.8MHz within 2.0:1SWR

7.0m  
Up to  
1kW

### 390-1 - 7m SSB Self Supporting Whip Antenna

- Same as 390, but with 15cm anodized (Almag 35) aluminium base flange for deck mounting (self support)

7.0m  
Up to  
1kW

### 5308-R - 7m SSB Whip Antenna. (Twin to 5208-R VHF)

- Rugged performer for day to day communications.
- Conductors run the full length (no loading coil) – permanently sealed.
- Chrome-plated brass ferrules with side feed termination band
- 2 sections: Base 4.1m; Tip 2.9m
- Suggested mounts: 409-R or 410-R Mounting Kit for deck or side mounting (mount support bracket 1.5m - 2.1m up from base)
- Mount kit and cable sold separately.
- Max Power Input: 1 KW
- Frequency 2-30MHz with tuner.
- Resonant point 10.8MHz within 2.0:1SWR

7.0m  
Up to  
1kW



# Classic

## HF/SSB Antennas

### 393 - 7m SSB Whip Antenna.

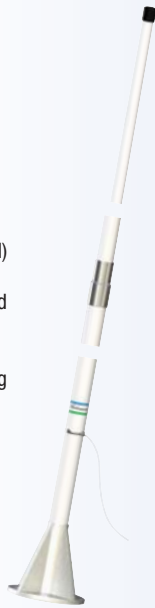
- For use in moderate seas.
- Conductors run the full length (no loading coil) – permanently sealed.
- Chrome-plated brass ferrules with side feed termination band
- 3 sections: Base 2.3m; Centre 2.3m; Tip 2.3m
- Suggested mounts: 409-R or 410-R for deck or side mounting (mount support bracket 1.5m - 2.1m up from base).
- Mount kit and cable sold separately.
- Max Power Input: 1 KW
- Frequency: 2-30MHz with tuner.
- Resonant point 10.8MHz within 2.0:1SWR



7.0m  
Up to  
1kW

### 4328 - 8.5m Two Section, Self Supporting SSB Antenna.

- Self Supporting Whip Antenna.
- Conductors Running Full-Length (no loading coil) permanently sealed in Shakespeare white fibreglass.
- Designed for large vessels where highest HF-band performance is required.
- Chrome-plated brass centre fittings.
- 12.8cm anodized aluminium base flange for mounting as a 'self-supporting' antenna.
- Side feed termination band
- Two Sections: Base 4.9m; Tip 3.6m
- Max Power Input: 1 KW
- Frequency: 2-30MHz with tuner.
- Resonant point: 10.8MHz within 2.0:1SWR



8.5m  
Up to  
1kW

### 5300 - 8.5m Two Section SSB Antenna.

- Designed for larger commercial vessels, which demand peak performance over the entire HF marine band.
- Specifications same as **Style 4328**, but for mast mount.
- Chrome-plated brass centre fittings
- Anodized aluminium bottom ferrule
- Mount: The 60mm diameter x 609mm long 6061-T-6 anodized aluminium sleeve can be strapped directly to a mast or used with Shakespeare's Style 483 Clamp Set or Style 484 Wall Mounting Brackets (each sold separately)
- Resonant point: 10.8MHz within 2.0:1SWR
- Mounting Kit and cable sold separately.



8.5m  
Up to  
1kW

## LORAN Antennas

### 173 - 1.2m Loran C / DGPS Whip Top-loaded Fibreglass

- Ideal for strong Loran C signal areas and inland waterways.
- Recommended by most GPS manufacturers for a Differential Beacon Antenna.
- Chrome-plated brass ferrule
- Standard Loran C 3/8"-24 thread
- Loran coupler not included



1.2m

### 4208 'Navigator' - 2.4m Loran C whip

- This popular Loran C antenna is recommended by virtually all Loran manufacturers.
- Loran C Whip (formerly 10-3)
- Chrome-plated brass ferrule
- Standard Loran C 3/8"-24 thread
- Loran coupler not included



2.4m



Manufactured to withstand the worst elements and with excellent performance. All the antennas in this series offer excellent bandwidth/VSWR characteristics within the frequency range of 156 MHz - 162 MHz. Suitable for GMDSS installations.

**V-Tronix**   
by *Shakespeare*

*Shakespeare*  
**2** YEAR  
WARRANTY

## VHF Antennas

### **MD 70** - 1.7m Extra Heavy Duty VHF



- White, tapered fibreglass tube, epoxy sealed.
- End-Fed Antenna with Universal Base
- Brass / Copper Element
- 0.3m of RG213 cable fitted with 'N' jack
- Cast aluminium integral base with white gloss finish and 'U' bolts (supplied).
- Mounts on both horizontal and vertical poles
- Max Power Input: 50 watts
- SWR: Nominally 1.5:1 at 156.8MHz.
- Bandwidth: 5MHz within 2.0:1 VSWR
- DC Grounding : Yes

### **MD 7A** - 1.6m Extra Heavy Duty Dipole VHF



- Rugged white fibreglass tube, closed cell foam filled, epoxy resin sealed
- End fed antenna for mast mount.
- Heavy duty aluminium element.
- 1m of RG213 cable fitted with 'N' jack
- Complete with two 4715 mounting clamps
- Max Power Input: 100 watts
- SWR: Nominally 1.5:1 at 156.8MHz.
- Bandwidth: 7MHz within 2.0:1 VSWR
- DC Grounding : Yes

### **MD 15** - 2.75m Extra Heavy Duty Dipole VHF



- Rugged white fibreglass tube, closed cell foam filled, epoxy resin sealed.
- End fed antenna for mast mount.
- Brass elements.
- 1m of RG213 cable fitted with 'N' jack
- Complete with two 4715 mounting clamps
- Max Power Input: 100 watts
- SWR: Nominally 1.5:1 at 156.8MHz.
- Bandwidth: 6MHz within 2.0:1 VSWR
- DC Grounding : Yes

## AIS Antenna

### **AIS-COM** - 1.6m Extra Heavy Duty Dipole AIS



- Rugged white fibreglass tube, closed cell foam filled, epoxy resin sealed
- End fed antenna for mast mount.
- Heavy duty aluminium element.
- 1m of RG213 cable fitted with 'N' jack
- Complete with two 4715 mounting clamps
- Max Power Input: 100 watts
- SWR: Nominally 1.5:1 at 161.5MHz.
- Bandwidth: 7MHz within 2.0:1 VSWR
- DC Grounding : Yes







## 2025 SeaWatch® 35cm Variable Gain Control Marine TV antenna.

- LED power indicator on control box and antenna head.
- AC / DC power supply with auto sensing circuitry.
- Not recommended for sail boat masts.
- Mounting – clamps to 25mm mount or pipe.
- Weatherproof.
- Solid state electronics for reliability.
- Frequency 50-890 MHz.
- Low noise amplifier built in.
- Operates on 12vDC or 110vAC / 220vAC.
- 9m ultra low loss RG-59 coax cable.
- Power consumption: 110mA.
- Gain: variable -10dB - +20dB.
- Weight: 2.26 kg (5lbs)
- Dimensions: 37W x 40L x 8H cm

## 2030-GE SeaWatch® 53cm Omnidirectional Marine TV antenna. Digital and HDTV Ready!

- Maximum omnidirectional performance.
- Built in pre amp.
- AC / DC switchable power supply.
- Mounting - 1"-14 thread ferrule built in.
- Weatherproof.
- Solid state electronics for reliability.
- Frequency 50-890 MHz.
- Low noise amplifier built in.
- Operates on 12vDC or 110vAC / 220vAC.
- 9m ultra low loss RG-59 coax cable.
- Power consumption: 83mA
- Gain: 20dB avg.
- Weight: 5kg (11lbs)
- Dimensions: 53W x 4.5H cm

## Extension Masts



### 5228, -4, -2, -1 Heavy Duty Fibreglass Extension Masts.

- Constructed of high-quality white fibreglass to match, Galaxy® Antennas. Extension masts can be used to increase antenna height for improved range, or to place it above on-board obstructions.
- Stainless steel upper and lower ferrules with standard 1"-14 thread
- High-gloss, non-yellowing, polyurethane finish.
- 4 models:
  - **5228** length 2.4m, dia.38mm.
  - **5228-4** length 1.2m, dia 38mm
  - **5228-2** length 0.6m, dia 25mm.
  - **5228-1** length 0.3m, dia 25mm.

### 4700 Heavy Duty Stainless Steel Extension Pole Series

- Heavy-duty, 316 grade stainless steel extension pole with 1" x 14 TPI thread, male and female fittings.
- Ideal for antenna extension mast, GPS, etc.
  - **4700** 15cm long, 25mm dia
  - **4700-1** 30cm long, 25mm dia.
  - **4700-2** 60cm long, 25mm dia.

### 4008 Heavy Duty Fibreglass Extension Pole

- A sturdy, lightweight, 38mm diameter extension mast manufactured of structurally strong fibreglass for heavy-duty applications. The mast is hollow, for antenna cable. White Fibreglass with chrome plated brass ferrules.Increases antenna height for improved range, or to place it above 'on-board' obstructions
- Male upper, female lower 1"-14 threads.
  - **4008-13** length 4.1m, 38mm dia.
  - **4008** length 2.4m, 38mm dia.
  - **4008-4** length 1.2m, 38mm dia.

## Mounts & Accessories

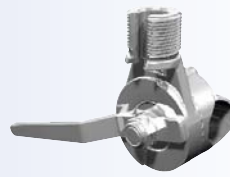
Shakespeare antennas are complemented with an extensive selection of the very best accessories available.

The finest stainless steels are mirror-finished to a level of sheen that is unmatched. Nylon and polycarbonate accessories are critically inspected, and only the best leave the factory.



### **4187** Stainless Steel Ratchet Mount

- Four way ratchet mount.
- Slot centre cable feed.
- Standard 1" – 14 thread.
- Quick release lever for folding down antenna.



### **4190** Stainless Steel Rail Ratchet Mount

- Low profile Stainless Steel Ratchet Mount for 22mm / 25mm vertical or horizontal rails.
- For antennas up to 2.4m.
- Quick release lever for easy lay down.
- Cable slot.



### **4187-HD** Heavy Duty Stainless Steel Ratchet Mount.

- Same as Style 4187 with extra strength and rigidity.
- Use wherever its extra heavy-duty construction is needed.



### **408-R** Upper Insulated Stand Off Bracket

- Insulated stand-off bracket of white molded plastic.
- For use with Styles 81-S and 407 Swivel Mounts.
- For antennas of 25mm, 28mm and 38mm using insert provided.
- Includes 25mm and 28mm adaptors.



### **4187-WH** Ratchet Mount

Versatile four-way stainless steel ratchet design for deck or side mounting. 4187-WH has no handles for installations where lay down is not required.

- Standard 1" -14 thread.
- Slot for cable feed-through



### **407** Heavy-Duty Swivel Mount

- Four-way action, chrome brass mount.
- For deck or side mounting (fits almost any mounting location) permits antenna lay down in desired direction.
- 1" -14 thread.



### **5187** Sleek Stainless Steel Ratchet Mount.

- Four way ratchet mount.
- Slot centre cable feed.
- 1" – 14 thread.



### **81-S** Stainless Steel Swivel Mount

- For deck or side mounting when used with an upper support bracket.
- Base is dual joint, free-pivoting, and allows easy lowering of antenna for clearing overhead obstructions.
- 1" -14 thread.



### **4188-S** Stainless Steel Rail Ratchet Mount

- Stainless Steel Ratchet Mount for 22mm / 25mm vertical or horizontal rails.
- For antennas up to 2.4m.
- Quick release lever for easy lay down.
- Cable slot



### **409-R** Mounting Kit

- Combines the 407, Heavy-duty Swivel Mount, with the 408-R Insulated Stand-off Bracket.



### **4188-SL** Stainless Steel Rail Ratchet Mount

- Stainless Steel Ratchet Mount for 22mm / 38mm vertical or horizontal rails.
- For antennas up to 2.4m.
- Quick release lever for easy lay down.
- Cable slot.



### **410-R** Mounting Kit

- Combines the 81-S, Swivel Mount, with the 408-R Insulated Stand-off Bracket.



## Mounts & Accessories



### **4365** Straight Mount

- 100mm high, 1"-14 thread stainless steel mount.



### **4191** Stand-Off Heavy Duty Extension Bracket.

- Heavy-duty stainless steel bracket to clear overhanging or other obstacles. Adjustable length: 76mm to 203mm.



### **4705** Thread Pipe Adapter

- 25mm adaptor for standard 25mm male fitting. Attaches easily with set screws.



### **4006** Stainless Steel Double Female Ferrule

114mm ferrule with 1"-14 female threads at both ends.



### **4710** Stainless Steel Flange Mount

Heavy-duty, low profile, 25mm high mount with standard 1"-14 threads. For GPS, Marine TV and shorter antennas.



### **AHDVM** Heavy Duty Vertical Mast Mount

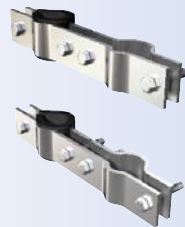
Heavy duty vertical mount with U-bolts and nuts. Stainless steel construction, 90mm x 90mm backing plate, 120mm height, 65mm hole centres, 1" x 14 TPI thread



### **MXG 100** Mast Mount

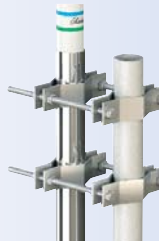
Mounting Plate with U-Bolts A rugged, metal mounting plate for mounting large antennas to a mast or pole.

Galvanised steel mounting plate with two sets of U-bolts and nuts. Plate size: 10cm x10cm. Hole centres: 5cm and 6.5cm.



### **4715** Mounting Clamp Set

Galvanised steel mounting clamps. Attaches an antenna 25mm – 50mm diameter to a mast diameter of 25mm to 50mm. Two clamps per set. Includes pliable rubber pad cushions the antenna. For MD7A and MD15 antennas.



### **483** Mast Clamp Set

The Style 483 is a Mast Clamp Set for Shakespeare's Style 476 antenna. Mast clamp for strapping antennas directly to a mast.



### **484** Wall Mount Bracket

Wall Mounting Bracket Kit for Style 476 VHF antenna. Wall bracket for antennas with 7cm diameter mounting sleeve.



### **4712** Antenna Lay-down Hook

Heavy-duty "J" hook to support antennas up to 38mm diameter when in the lay-down position. chrome-plated brass construction.

For information on the full range of Shakespeare antennas, mounts, extensions, brackets, cables, and other installation accessories, see the general catalogue or visit [www.shakespeare-antennas.com](http://www.shakespeare-antennas.com)

# All About Antennas

## A MARINE RADIO IS ONLY AS GOOD AS ITS ANTENNA

Even the most expensive radio will perform poorly with a second rate antenna.

The quality, performance and reliability of Shakespeare marine antennas will ensure, when correctly installed, years of trouble free use.

From the largest seagoing ships to the smallest sports boats, Shakespeare antennas have held up for years under the worst marine conditions, always performing to their maximum design capabilities.

## Antenna Length

- Height is paramount in getting the greatest range, and encourages the choosing of an antenna that can be placed as high as possible on the boat.
- Sailboats: As a general rule, sailboats have a 3' - 5' antenna mounted on the masthead. Some racing enthusiasts opt for a second 8' antenna mounted on the stern in the event of dismasting. Either is acceptable. A decision should be made on personal preference.
- Powerboats: Most power boats from 16' to 25' in length use a standard 8' antenna, while bigger vessels have the option of larger antennas with more gain. Caution: be sure to allow enough lay down room for clearing low bridges or other limitations. Whichever choice is made, a sturdy mounting arrangement must be used to avoid damage to both boat and antenna.

## Gain

- This is a rating stated in decibels (dB). Generally, the higher the gain, the greater the communicating range. However, keep in mind that the higher the gain, the more compressed the beam width becomes (see illustration). A narrow beam can cause fading in rolling seas.
- Sail boats and small, lightweight boats, which roll excessively in heavy seas, normally do not use a gain rating above 6dB. The more stable the platform of a vessel, the higher the gain that can effectively be used.

## Mounts

- Use the mount style that will best support the antenna on a particular boat.
- When using a two-piece antenna system greater than 10' in length, an upper support clamp is necessary.
- For antennas of 4m to 5.5m, the upper clamp should be 0.9m to 1.5m from the bottom. For antennas of 5.5m to 7m, the upper clamp should be 1.2m to 2.4m from the bottom. Positioning the upper clamp too high or too low can significantly increase the potential for structural failure.

## Cable

- RG-58 cable is sufficient for cable runs up to 20'.
- For runs over 20', larger and better, low loss RG-8/X, RG-8A/U or RG-213 are preferable.
- Shakespeare uses low-loss, UV stable RG-8/X throughout its Galaxy antenna line.
- Today's enhanced cellular services, which operate in the 1800-1900 MHz range, place even more importance on using a high quality coax. That's why Shakespeare developed its exclusive coax cables for dual band cellular antennas.
- For optimum performance from your VHF, HF/SSB and cellular communications systems, the cable should be kept as short as possible. Caution: cable supplied with some antennas may not be cut or altered. Be sure to check the instruction sheet before attempting to shorten the cable.

## Low Angle Radiation

- Shakespeare pioneered low angle techniques in marine antennas in the 1960s and built them into many models. Low angle minimizes fading while maximizing range even during excessive boat roll in turbulent seas. A normal angle shortens the range and wastes power.

## A FINAL WORD

- The greatest tip to keep in mind is that no matter how much you pay for your radio, its performance will be directly proportional to the quality and performance capabilities of the antenna. Don't compromise... Insist on genuine Shakespeare Antennas.

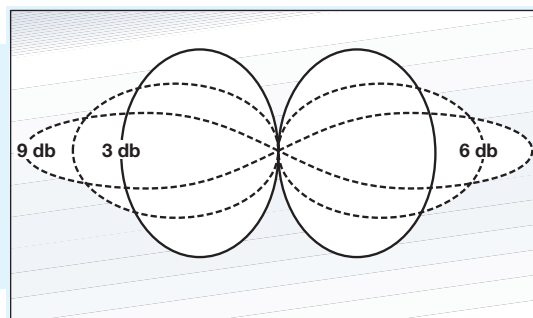
## RELIABILITY BEGINS WITH QUALITY CONSTRUCTION

Shakespeare fiberglass antennas are built with precision:

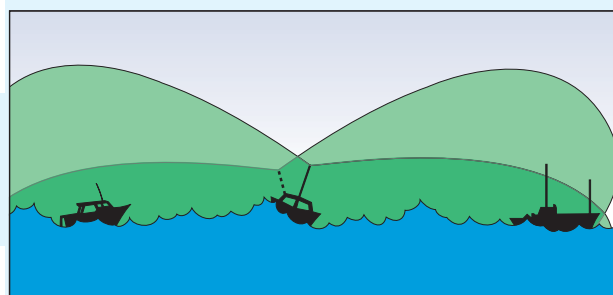
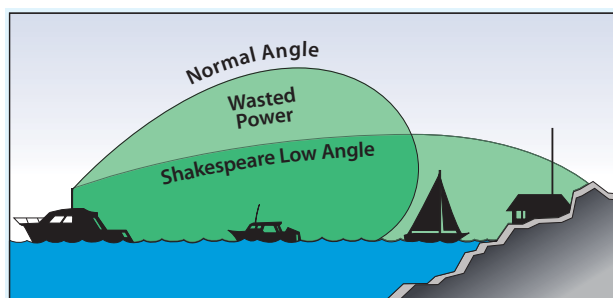
- Hand-soldered connections,
- Brass and copper elements,
- Strong mechanical joints and superior electronics.
- Radiator and electrical elements encased in an exclusive Shakespeare fiberglass radome.

## TIPS ON CHOOSING THE PROPER ANTENNA

There are many factors that influence the selection of a proper antenna for a specific application, we encourage consultation with a local dealer. When this is not possible, the following tips should be considered before making a final decision.



Typical Radiation Patterns



Shakespeare combines a normal beam width with a unique low angle of radiation to minimize signal fading in rough or rolling seas



Model No.	Fibreglass Style	Antenna Length	Gain	Max Input Power	VSWR	Bandwidth within 2.0:1 VSWR	DC Ground*	Ferrule	Cable Supplied	Connector Supplied	Page No.
<b>VHF</b>											
6400	White high gloss Whip	1.2m	3dB	150 watts	< 1.5:1 @ 156.8 Mhz	3MHz	No	Stainless Steel	/	N connector	4
6396-AIS	White high gloss Whip	1.2m	3dB	50 watts	< 1.5:1 @ 161.5 Mhz	5MHz	Yes	Stainless Steel	/	N connector	6
5400-XP	White high gloss Whip	1.2m	3dB	150 watts	< 1.5:1 @ 156.8 Mhz	3MHz	No	Stainless Steel	6m - RG8X	PL-259	7
5410-XTC	White high gloss Whip	1.2m	3dB	50 watts	< 1.5:1 @ 156.8 Mhz	3MHz	No	Stainless Steel	/	SO-239 Integral	7
5400-XTM	White high gloss Whip	1.2m	3dB	50 watts	< 1.5:1 @ 156.8 Mhz	5MHz	No	Stainless Steel	/	SO-239 Integral	7
5400-XT	White high gloss Whip	1.2m	3dB	50 watts	< 1.5:1 @ 156.8 Mhz	5MHz	No	Stainless Steel	6m - RG8X	PL-259	8
5401-XT	White high gloss Whip	1.2m	3dB	50 watts	< 1.5:1 @ 156.8 Mhz	5MHz	No	Stainless Steel	6m - RG8X	PL-259	8
5396-AIS	White high gloss Whip	1.2m	3dB	50 watts	< 1.5:1 @ 161.5 Mhz	5MHz	Yes*	Stainless Steel	6m - RG8X	PL-259	10
396-1-AIS	White gloss Whip	1.5m	3dB	50 watts	< 1.5:1 @ 161.5 Mhz	6MHz	No	Aluminium Sleeve	/	SO-239 Integral	11
MD70	White tube	1.5m	3dB	50 watts	< 1.5:1 @ 156.8 Mhz	5MHz	Yes*	Aluminium Base	1m - RG213	N Type Jack	14
MD7A	White tube	1.6m	3dB	100 watts	< 1.5:1 @ 156.8 Mhz	7MHz	Yes*	N/A	1m - RG213	N Type Jack	14
AIS-COM	White tube	1.6m	3dB	100 watts	< 1.5:1 @ 161.5 Mhz	7MHz	Yes*	N/A	1m - RG213	N Type Jack	14
HS-2774-1	White high gloss Whip	1.8m	4dB average	125 watts	< 2:1 across the band	38MHz	Yes*	Stainless Steel	6m - RG8X	PL-259	9
HS-2774	White high gloss Whip	1.8m	4dB average	125 watts	< 2:1 across the band	38MHz	Yes*	Stainless Steel	6m - RG8X	PL-259	9
6225	White high gloss Whip	2.4m	6dB	150 watts	< 1.5:1 @ 156.8 Mhz	3MHz	Yes	Stainless Steel	/	N connector	4
5225-XP	White high gloss Whip	2.4m	6dB	150 watts	< 1.5:1 @ 156.8 Mhz	3MHz	Yes*	Stainless Steel	6m - RG8X	PL-259	7
5225-XTC	White high gloss Whip	2.4m	6dB	100 watts	< 1.5:1 @ 156.8 Mhz	6MHz	Yes	Stainless Steel	/	SO239 intergral	7
5325-XT	White high gloss Whip	2.4m	6dB	100 watts	< 1.5:1 @ 156.8 Mhz	6MHz	Yes	Stainless Steel	/	SO239 intergral	7
5225-XT	White high gloss Whip	2.4m	6dB	100 watts	< 1.5:1 @ 156.8 Mhz	5MHz	Yes*	Stainless Steel	6m - RG8X	PL-259	8
5226-XT	Black high Gloss Whip	2.4m	6dB	100 watts	< 1.5:1 @ 156.8 Mhz	5MHz	Yes	Stainless Steel	6m - RG8X	PL-259	8
5202	White gloss Whip	2.4m	6dB	100 watts	< 1.5:1 @ 156.8 Mhz	6MHz	Yes*	Chrome / Brass	6m - RG58	PL-259	11
MD15	White tube	2.75m	6dB	100 watts	< 1.5:1 @ 156.8 Mhz	6MHz	Yes*	N/A	1m - RG213	N Type Jack	14
5399	White high gloss Whip	3.0m	6dB	100 watts	< 1.5:1 @ 156.8 Mhz	3MHz	Yes*	Stainless Steel	6m - RG8X	PL-259	8
5230	White high gloss Whip	4.3m	8dB	200 watts	< 1.5:1 @ 156.8 Mhz	3MHz	Yes*	Stainless Steel	6m - RG8X	PL-259	8
5018	White high gloss Whip	5.5m	9dB	150 watts	< 1.5:1 @ 156.8 Mhz	3MHz	No	Stainless Steel	6m - RG8X	PL-259	8
6018	White high gloss Whip	5.6m	9dB	150 watts	< 1.5:1 @ 156.8 Mhz	3MHz	Yes	Stainless Steel	/	N connector	4
4018	White gloss Whip	5.8m	9dB	50 watts	< 1.5:1 @ 156.8 Mhz	3MHz	No	Chrome / Brass	6m - RG58	PL-259	11
4018-M	White gloss Whip	5.8m	9dB	50 watts	< 1.5:1 @ 156.8 Mhz	3MHz	No	Aluminium Sleeve	6m - RG58	PL-259	11
476	White gloss Whip	6.4m	10dB	350 watts	< 1.5:1 @ 156.8 Mhz	10MHz	Yes*	Aluminium Sleeve	/	SO-239 Integral	12
5309-R	White gloss Whip	7.0m	9dB	150 watts	< 1.5:1 @ 156.8 Mhz	3MHz	No	Stainless Steel	6m - RG8X	PL-259	8
5208-R	White gloss Whip	7.0m	9dB	50 watts	< 1.5:1 @ 156.8 Mhz	3MHz	No	Chrome / Brass	4.5m - RG58	PL-259	12
5208-3	White gloss Whip	7.0m	9dB	50 watts	< 1.5:1 @ 156.8 Mhz	3MHz	No	Chrome / Brass	4.5m - RG58	PL-259	12
<b>SSB</b>											
5390	White high gloss Whip	5.5m	/	1 kw	2-30 Mhz with tuner	Resonat point 10.8 MHz	-	Stainless Steel	N/A	Side Feed Band	10
6390	White high gloss Whip	5.6m	/	1 kw	2-30 Mhz with tuner	Resonat point 14 MHz	-	Stainless Steel	N/A	Side Feed Band	6
390	White gloss Whip	7.0m	/	1 kw	2-30 Mhz with tuner	Resonat point 10.8 MHz	-	Chrome / Brass	N/A	Side Feed Band	12
390-1	White gloss Whip	7.0m	/	1 kw	2-30 Mhz with tuner	Resonat point 10.8 MHz	-	Aluminium Flange	N/A	Side Feed Band	12
5308-R	White gloss Whip	7.0m	/	1 kw	2-30 Mhz with tuner	Resonat point 10.8 MHz	-	Chrome Brass	N/A	Side Feed Band	12
393	White gloss Whip	7.0m	/	1 kw	2-30 Mhz with tuner	Resonat point 10.8 MHz	-	Chrome Brass	N/A	Side Feed Band	13
5310-R	White gloss Whip	7.0m	/	1 kw	2-30 Mhz with tuner	Resonat point 10.8 MHz	-	Stainless Steel	N/A	Side Feed Band	10
4328	White gloss Whip	8.5m	/	1 kw	2-30 Mhz with tuner	Resonat point 8.4 MHz	-	Stainless Steel	N/A	Side Feed Band	13
5300	White gloss Whip	8.5m	/	1 kw	2-30 Mhz with tuner	Resonat point 8.4 MHz	-	Stainless Steel	N/A	Side Feed Band	13
<b>AM/FM</b>											
5420-XT	White high gloss Whip	1.2m	N/A	N/A	Receive Only	500 Khz - 108 MHz	No	Stainless Steel	3.6m - RG62	Motorola Plug	9
5421-XT	Black high gloss Whip	1.2m	N/A	N/A	Receive Only	500 Khz - 108 MHz	No	Stainless Steel	3.6m - RG62	Motorola Plug	9
6420	White high gloss Whip	1.2m	N/A	N/A	Receive Only	500 Khz - 108 MHz	No	Stainless Steel	6m - RG62	Motorola Plug	5
5420-XTC	White high gloss Whip	1.2m	N/A	N/A	Receive Only	500 Khz - 108 MHz	No	Stainless Steel	6m - RG62	SO-239 connector & Motorola Plug	9
5235-XT	White high gloss Whip	2.4m	N/A	N/A	Receive Only	500 Khz - 108 MHz	No	Stainless Steel	6m - RG62	Motorola Plug	9
6235	White high gloss Whip	2.4m	N/A	N/A	Receive Only	500 Khz - 108 MHz	No	Stainless Steel	6m - RG62	Motorola Plug	5
5235-XTC	White high gloss Whip	2.4m	N/A	N/A	Receive Only	500 Khz - 108 MHz	No	Stainless Steel	6m - RG62	SO-239 connector & Motorola Plug	9
<b>WiFi</b>											
5248	White high gloss Whip	0.6m	8dB	WiFi	NA	2.40-2.48 GHz	Yes	Stainless Steel	/	N connector	10
<b>CELLULAR</b>											
6410	White high gloss Whip	1.2m	3dB	50 watts	< 1.5:1 @	96/140 MHz	No	Stainless Steel	/	N connector	5
6237	White high gloss Whip	2.4m	3dB	50 watts	852.65 / 1918.7 Mhz	96/140 MHz	No	Stainless Steel	/	N connector	5
<b>LORAN</b>											
173	White gloss Whip	1.2m	N/A	N/A	100 KHz Loran	Loran C	-	Chrome / Brass	N/A	Mounted with Ferrule	13
4208	White gloss Whip	2.4m	N/A	N/A	100 KHz Loran	Loran C	-	Chrome / Brass	N/A		13

**European Office**  
Enterprise Way  
Fleetwood  
Lancashire  
FY7 8RY  
United Kingdom

**Shakespeare**<sup>®</sup>

**US Office**  
6111 Shakespeare Road  
Columbia SC  
29223  
USA  
Tel: +1 803 227 1590

**Electronic Products Group**



**European Office**

**Tel:** +44 (0)1253 85 87 87

**Fax:** +44 (0)1253 85 95 95

**E-mail:** Sales: sales.manager@jardenuk.co.uk  
Sales Office: sales.office@jardenuk.co.uk

**Web site:** www.vtronix-antennas.com  
www.shakespeare-marine.com

**Dealer Stamp**

**JARDEN**  
applied materials  
a division of Jarden Process Solutions

